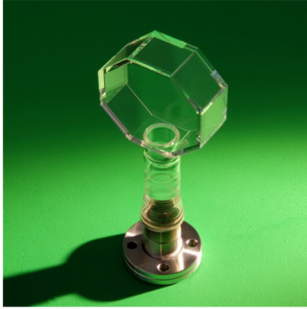




曉明技術株式會社

Akatsuki Technology Co Ltd

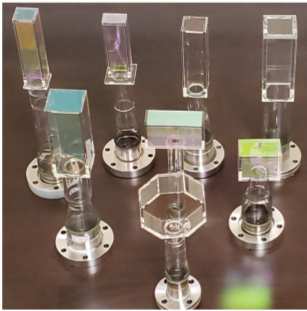


Special Glass-Made Optical Cells by Optical Contact

原子键合工艺生产特殊玻璃超高精度光学部品

MOT/BEC octagonal UHV cell by Optical Contact

八角形(十面体)超真空BEC ,MOT Cold-Atomic UHV 腔体



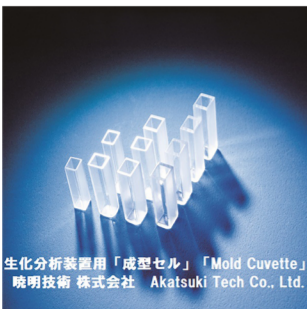
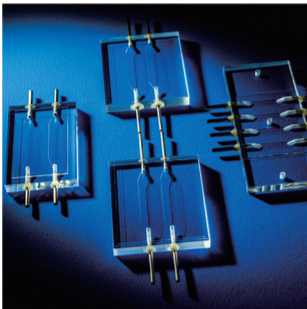
- Glass Materials: Sapphire, Quartz, Pyrex etc.
材质:光学蓝宝石、超纯度石英、PYREX等
- UHV Cell 超高真空腔: $\sim 10^{-13}$ PaM³/Sec
- Other Special Cells: Accuracy 保証精度 $\sim 0.1\mu\text{m}$



Various Flow-Cells of Optical/Imaging Particle Counters

光学式/影像式微粒子计数器用流动池

- Liquid Particle Counters (Cytometry of Blood or Urinal etc.)
血球/尿有形/細菌计数分析仪器用
- Solid Particle Counters (for Water, Air or other fluids)
超纯水/空气中等微粒子计数等
- Other Special Flow-Cells
其他OEM特殊部件
- Channel size: 流路最小尺寸 $0.6\mu\text{m} \sim$



Various glass Molded Cuvette Cells

各类成型玻璃比色皿

- Biochemical Spectrum instrument
生化分析用
- Common type: 4x5, 5x5, 4.9x6 mm

生化分析装置用「成型セル」 「Mold Cuvette」
曉明技術 株式会社 Akatsuki Tech Co., Ltd.



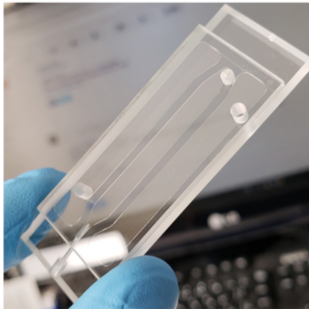
曉明技術株式會社

Akatsuki Technology Co Ltd



Ultra-High-Vacuum Cell of Drum-Type 鼓形超真空腔

- Glass Materials: Sapphire, Quartz, Pyrex etc.
材质:光学蓝宝石、超纯度石英、PYREX等
- UHV Cell 超高真空腔: $\sim 10^{-13}\text{PaM}^3/\text{Sec}$
- Size: 2x2x2mm~80x80x400mm



Various Glass Micro-Chips for MEMS 各类玻璃材质的微小流路(生物芯片)等

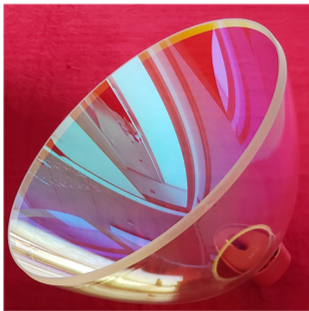
- DNA diagnosis 核酸诊断用
- Electrophoresis 电泳等
- Bacterials counters 细菌计数等
- Channel Size: 流路最小尺寸 $1\mu\text{m}$ ~



Akatsuki Tech
Reflector mold by Glass

Ellipse, Parabolic Reflectors for Lithography Machine 曝光仪(光刻机)用高精度椭圆, 双曲面等反射鏡

- Ellipse, Parabolic, Hyperbolic Mirrors molded with PYREX glass are widely used in Solar-Simulator, Lithography Machine or other special optical systems.
- 高精度椭圆, 双曲面, 抛物面等玻璃成型反射鏡, 广泛使用于太阳能



Various Optical Lens 光学透镜

Material: Sapphire、Quartz、Optical Glass Crystal

蓝宝石、石英、各类光学玻璃

Shape: Spherical or Aspherical 球面/非球面

Size: 内窥镜用微细透镜 $\phi 0.30\text{mm}$ ~大型准直仪用 $\phi 500\text{mm}$