

ArmD™ Multi-Core Optical Fiber

Concentric and Separate Multi-Core Fibers

ArmD™ Multi-Core Fiber Optics unlock a spectrum of capabilities for laser power delivery, providing precise control over power density and beam shape through the utilization of different cores or multiple cores simultaneously. Armadillo offers customizable multi-core optical fibers tailored to meet your specific needs.

ArmD™ Multi-Core Optical Fiber

Advantages

- Support for multi-kilowatt power levels
- Capability for non-circular core shapes
- Precise control over power density
- Enhanced precision
- Step-index profile
- Availability of special jackets for high temperatures, high vacuum, and harsh chemicals

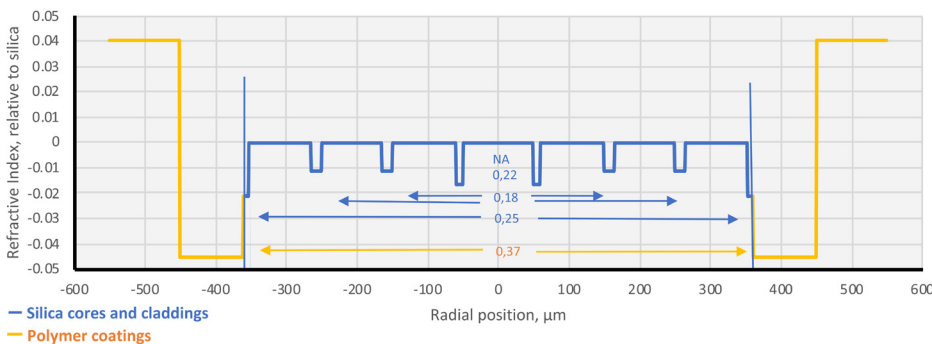
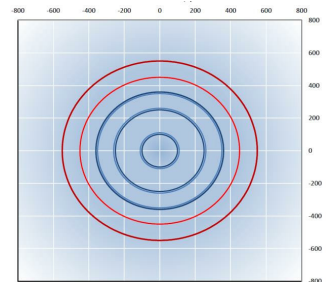
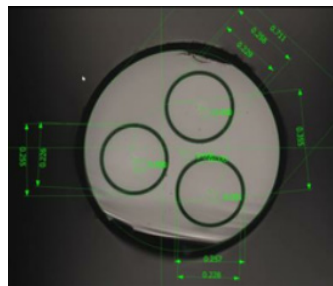
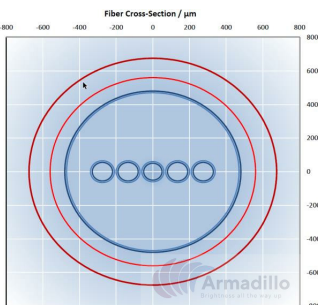
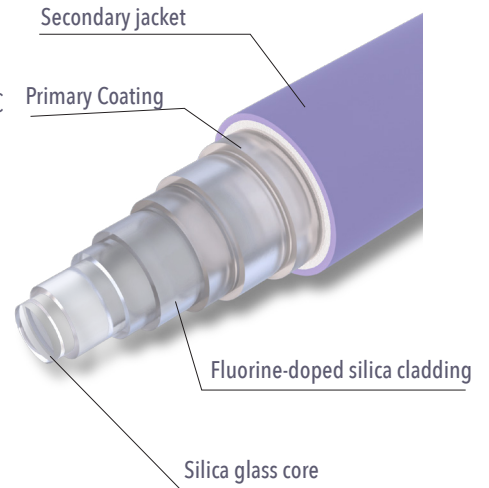
Jacketing Options:

Primary Coatings:

Hard Clad (Fluorinated Acrylate): -40 to +80°C
 Silicone: -40 to +150°C
 Polyimide: -190 to +350°C
 Acrylate: -40 to +85°C
 Aluminum: -196 to +400°C

Secondary Jacket:

ETFE (Tefzel®): -40 to +150°C
 Nylon: -40 to +100°C
 Acrylate: -40 to +85°C
 DuPont Hytel® 7246: -40 to +140°C
 Acrylate DeSolite® DF-0009: -40 to 150°C
 PFA Fluon®: -200° to +260°C



4 pairs of silica/F*doped silica layers (4 concentric cores) in Silicone and Nylon

* WF or UV 100/120/300/330/500/530/705/720/ /900/1100SN, NA=0,22 / 0,18 / 0,18/ 0,25 // 0,37

Our multi-core fibers are fully customizable. Please contact us for more information.

Applications

The preferred solution for processing metal sheets of varying thicknesses, sensing, laser delivery, and more applications.

SIA "Armadillo"
 LV40203150242
 Krisjana Valdemara iela 33-27,
 Riga LV 1010 Latvia



<https://armadillosia.com>
 Phone +1 408 900-8883
 Fax 408 834-7430
 info@armadillosia.com