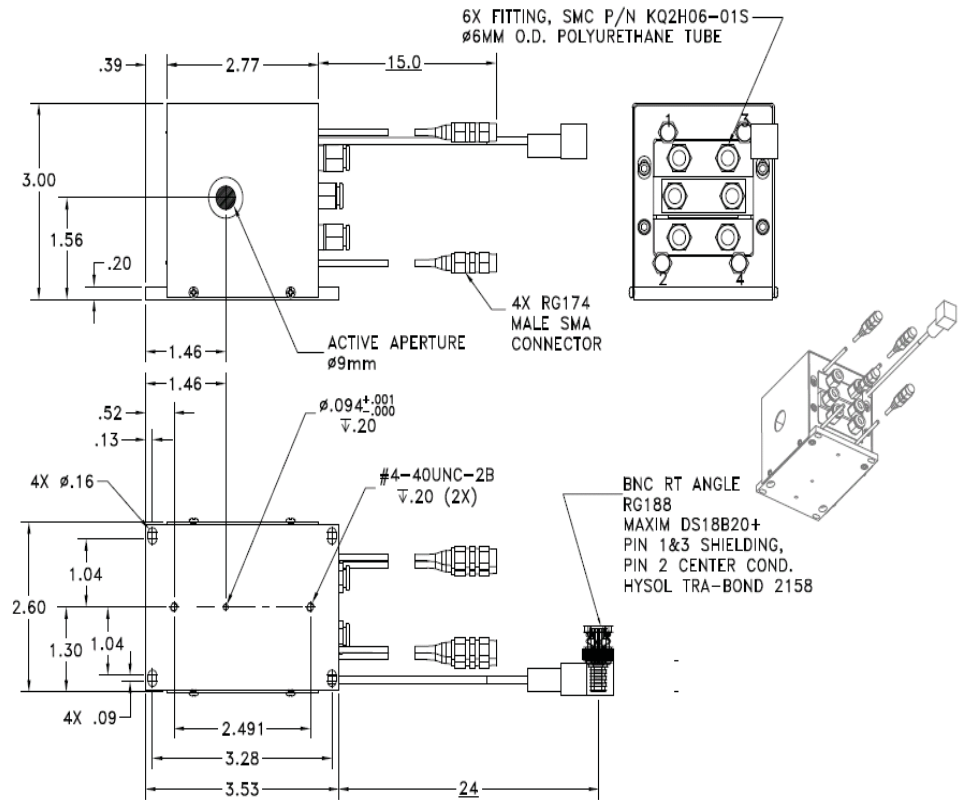


SPECIFICATIONS

OUTLINE DRAWING

AO Medium	Germanium
Acoustic Mode	Longitudinal
Acoustic Velocity	5.50mm/μs
Wavelength	9.4um
Input Polarization	90° to Mounting Plane
Output Polarization	90° to Mounting Plane
Insertion Loss	4%
Center Frequency (Fc)	70 MHz
RF Bandwidth	40 MHz
RF Power	120W
Active Aperture	9mm dia
Average Diffraction Efficiency	80%
Flatness Across Bandwidth	0.1
Min Diffraction Efficiency	N/A
Peak Valley at 633 mm	2:1
RMS at 633 mm	60 mrad
VSWR	N/A
Scan Angle	
Time Bandwidth	





**Document**  
**10/15/15**  
**Control**

NOTES;

1. Delay/splitter box is included but not shown.
2. 4 element phased array.
3. input impedance 50 Ohms.
4. Unit to be water cooled.

THIS DOCUMENT IS THE PROPERTY OF GOOCH & HOUSEGO. IT IS NOT TO BE REPRODUCED OR DISCLOSED IN WHOLE OR IN PART OTHER THAN BY EMPLOYEES OF GOOCH & HOUSEGO AND ITS CONTRACTED REPRESENTATIVES AND DISTRIBUTERS. ANY EXCEPTION REQUIRES THE WRITTEN CONSENT OF AN AUTHORIZED REPRESENTATIVE OF GOOCH & HOUSEGO.

TOLERANCES: .XX .XXX	DR	Gerl Scholz 10/15/2015	 DESCRIPTION: <b>AODF 4070 Ge 9.4um</b> 4 Elec. Phased Array	
MATERIAL:	CHK			
FINISH: 	APP		PART NUMBER:	97-03260-02
	APP		REV:	1
			SHEET	1 OF 1