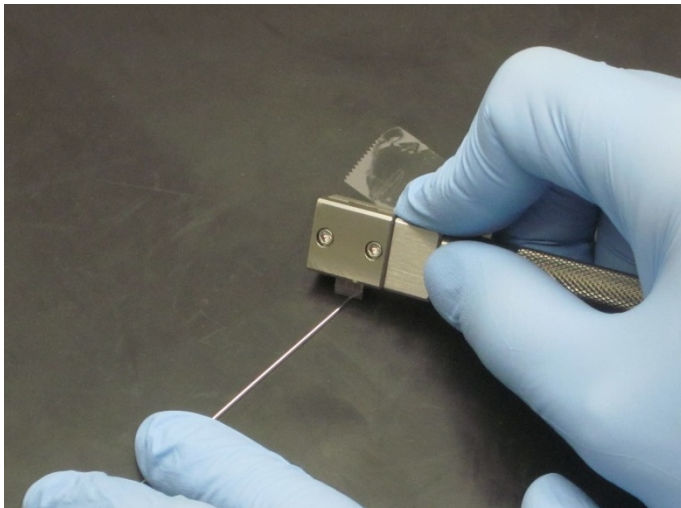


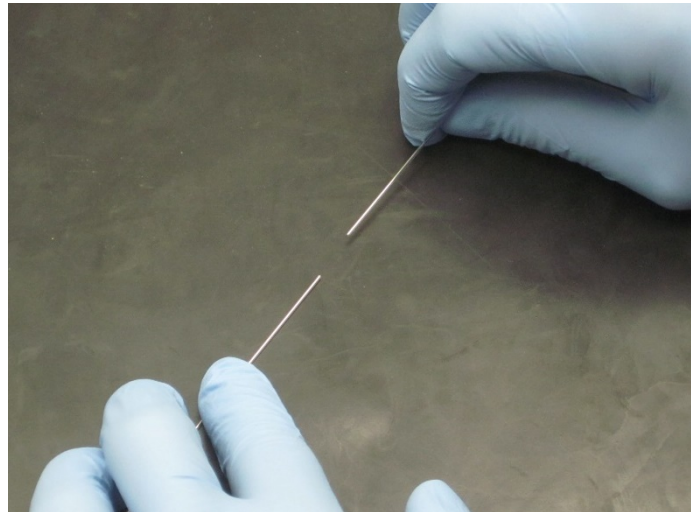


Hollow Fiber Cleaving

Bare hollow core fibers can be cleaved by first scoring (i.e., scratching the glass with a sharp blade) and then pulling the two ends of the fiber away from each other, see figure below. Many types of fiber cleavers will work (for example Model #F-CL1, sold by Newport®). **CAUTION the blade in most fiber cleavers is sharp and care must be taken to avoid personal injury.**



Score fiber with cleaver



Pull fiber apart, bend near the score only if necessary

Cleaving Tips:

- Tape fiber down to table or other surface prior to scoring
- Score the fiber only once by moving the blade perpendicular to the fiber axis in one direction. Do NOT move the blade back and forth in a “sawing” motion, instead just perform one relatively quick “slice”
- Use firm pressure to cut through the outside polymer coating, scratching the glass underneath; however, do not push so hard as to crush the glass
- After scoring the fiber, try to pull the two ends of the fiber apart. It may be necessary to bend the fiber slightly to break it apart; however, try to minimize the bend. Pulling rather than bending will lead to a cleaner cleave.
- Inspect the ends. If there is debris, e.g., tiny shards of glass, try using suction (e.g., a vacuum cleaner) and/or blowing across the tip with dry nitrogen or an inert gas to remove the debris.